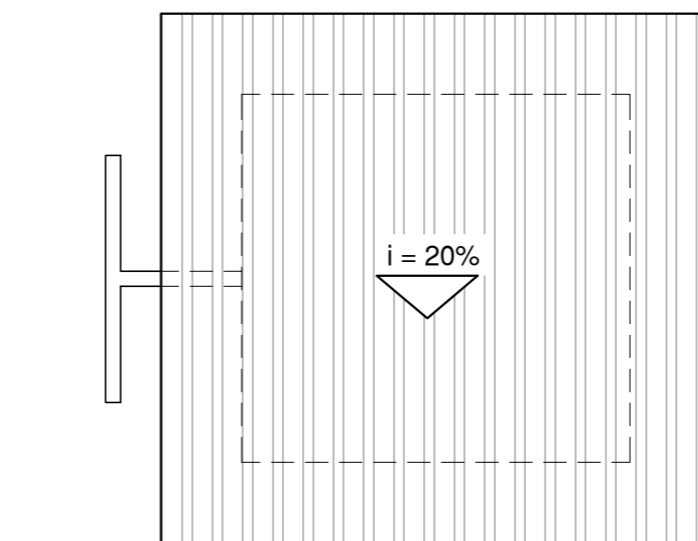
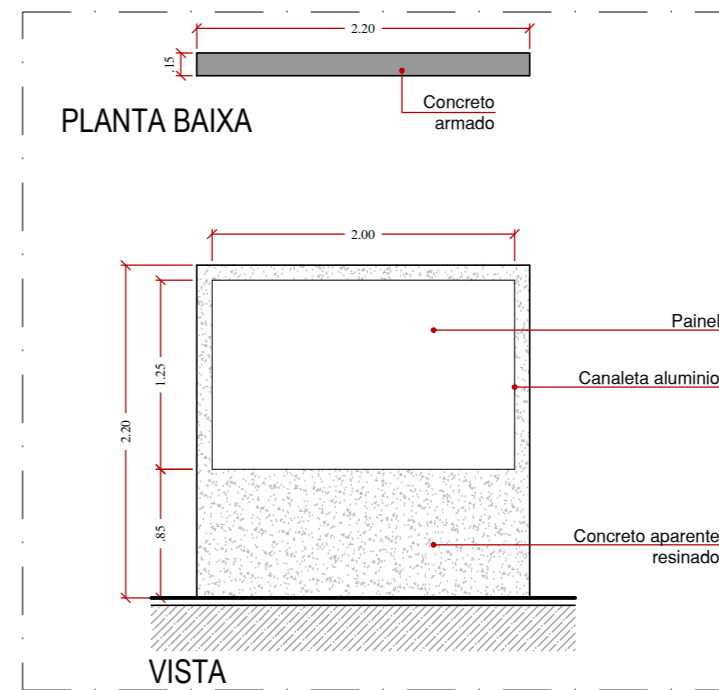


PLANTA BAIXA



COBERTURA

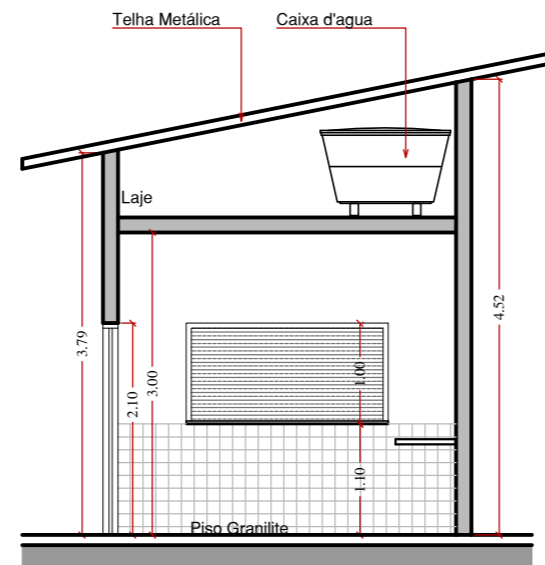


PLANTA BAIXA

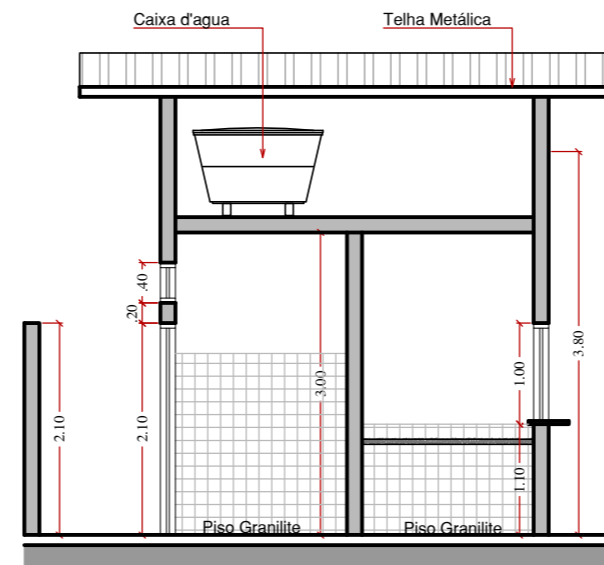
MURAL
esc. 1/50

CAIXILHOS						
	LARG.	ALT.	PEIT.	QT.	ILUM.	TIPO
P1	0,90 m	2,10 m	-	2	1,89 m ²	Abrir - ferro
P2	1,00 m	2,10 m	-	1	2,10 m ²	Enrolar
J1	1,40 m	0,40 m	2,30 m	2	0,56 m ²	Basculante
J2	2,00 m	1,00 m	1,10 m	1	2,00 m ²	Enrolar

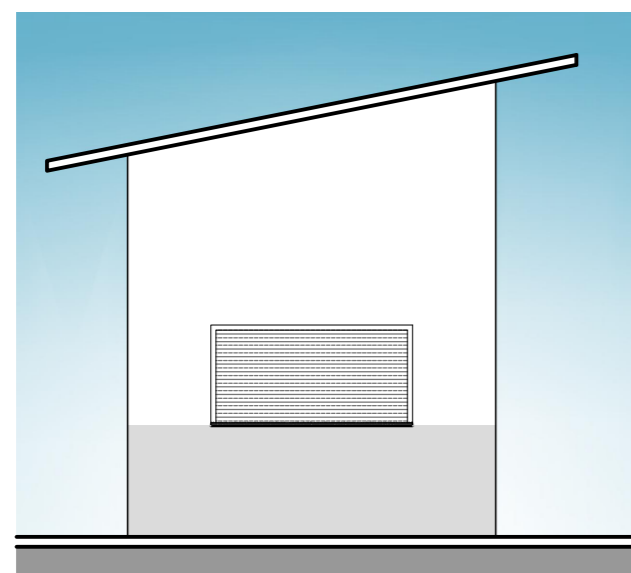
- LEGENDA
- 1 Bancada Pia - granito
 - 2 Balcão - granito



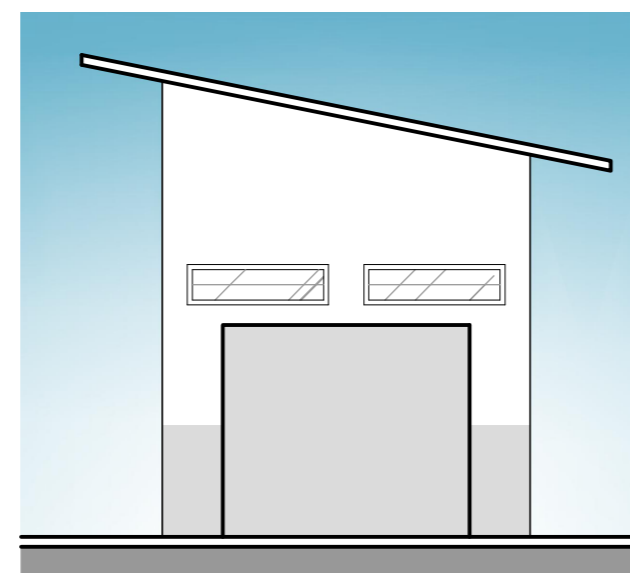
CORTE AA



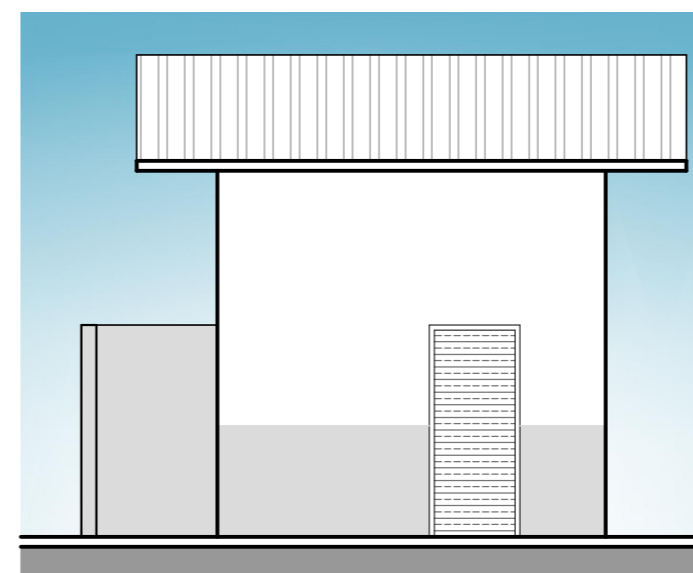
CORTE BB



VISTA 01



VISTA 02



VISTA 03

QUIOSQUE COM BANHEIROS

esc. 1/75



PROJETO ARQUITETÔNICO

Folha
2/2

Proprietário: Prefeitura Municipal de Santo Antonio de Posse

Obra: PARQUE GUADALUPE - FASE 2

Local: Bairro Jd. Maria Helena

Município: Santo Antonio de Posse / SP

Situação sem escala:

VER NO
MAPA DO
MUNICÍPIO

Prefeit Municipal
João Leandro Lolli

Autor de Projeto e Orçamento

Engº. Leonardo da S. Granziera
CREA 5069194055

A.R.T.: _____